

10 – 120 mm planity measuring and mouth rim inspection

for the inspection of containers made of clear glass, coloured glass and opal glass
for the inspection of round articles and moulded articles
with an inspection speed of up to 500 containers per minute

On-site installation, operation, service:

- Simple connection to an existing conveying belt
- Supply also with own conveying belt and ejection unit
- Connection to different line control systems and different data acquisition systems possible
- Self-test functions are installed
- Image evaluation with commercially available hardware



Technical data:

- Also available as mobile variant
- Machine dimensions: 553 x 670 x 2,180 mm (W x D x H)



Lauenhainer Weg 3
D-08393 Meerane
Germany

Tel: +49 (0)3764 7791870
Fax: +49 (0)3764 7791899
Web: www.optical-inspections.com
Mail: info@optical-inspections.com

Contact-free inspection of mouth rim defects and plane parallelism

for bottles and wide-neck jars with a finish diameter of 10 to 120 mm
independent from temperature variations, changing light conditions and glass colours



- + Detection of mouth rim defects with two lateral cameras in the angle of 90°
- + Detection of sloping neck finishes (deviation from plane parallelity)

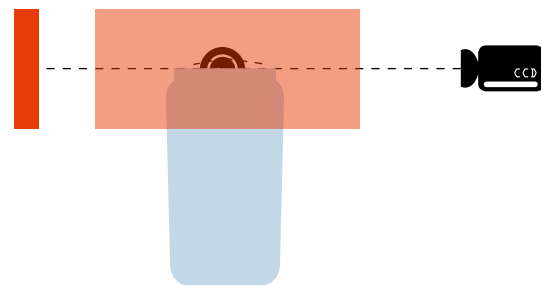
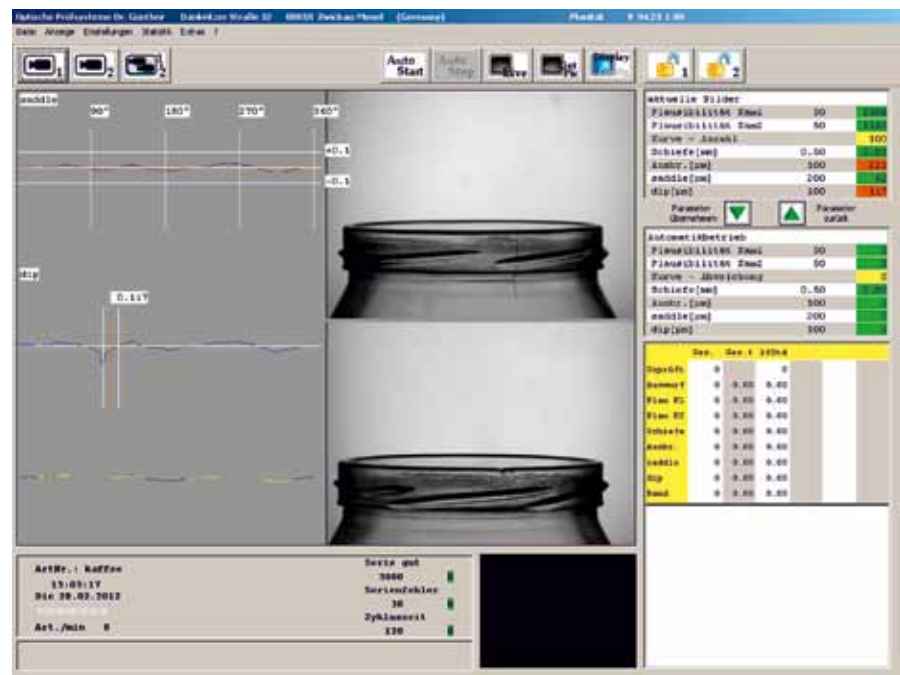
Measurement more accurate by the factor of 10 than with the vacuum system – higher production yield with reduced complaint risk



Optische Prüfsysteme
Dr. Günther

10 - 120 mm planity measuring and mouth rim inspection

replaces the contact-dependent tightness test and is more accurate by the factor of 10



Two lateral cameras installed at an angle of 90° detect the smallest defects and deviations totally contact-free and temperature-independent

Optical features:

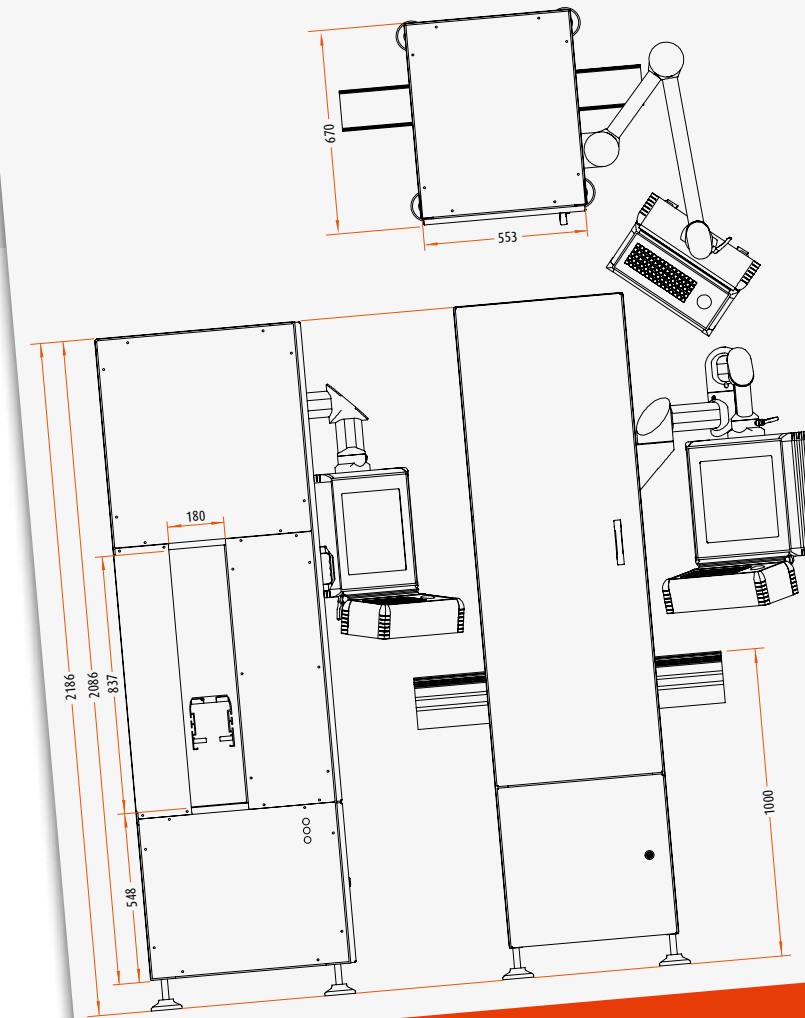
- 2 lateral high-resolution cameras in the angle of 90°
- LED flash lighting for background illumination

Inspections characteristics:

- The inspection is completely contact-free while the containers are driving on a conveying belt
- Mouth rims from 10 - 120 mm can be inspected
- Temperature-independent
- The measuring accuracy depends on the mouth rim diameter, the accuracy is e. g. 45 µm for a diameter of 48 mm
- Automatic compensation of axis deviations and unevenness on the conveying belt

Operation and evaluation:

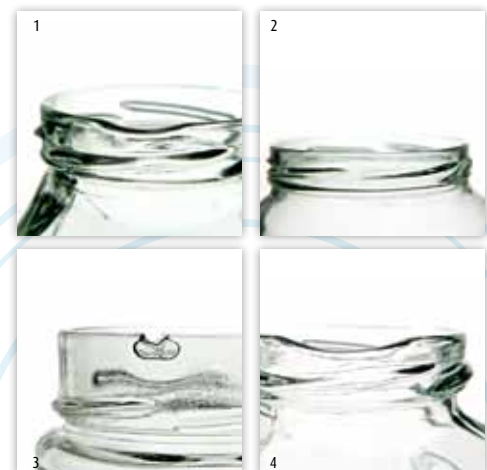
- Container tracking is path controlled with a rotary encoder up to the ejection unit
- All inspection parameters can be changed during running production
- Article change in 3 minutes
- No exchange of mouth rim illumination necessary if the mouth rim diameter changes when the article is changed
- Multiple statistic evaluations available



On-site installation:
Simple connection to an existing conveying belt, supply also with own conveying belt and ejection unit

Detection of mouth rim defects

with 2 lateral cameras in the angle of 90°



- 1 Dip
- 2 Saddle
- 3 Break-outs
- 4 Incomplete mouth rims

Detection of sloping neck finishes (deviation from plane parallelity)



Container shapes, container sizes and glass colours

The PLA has been developed for the automatic optical inspection and sorting of round and moulded articles made of clear glass, coloured glass and opal glass. On request you can rent our PLA and test it in your running production.

The shape or size of your container is not listed? Simply contact us. We will find a solution. Telephone: +49 (0)3764 7791870

